



L'Anse Junior Senior High School

December – 2021

Notes From the Nurse

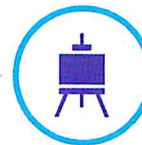
This time of year brings an increase in the amount of sickness that we see in school. It is more important than ever to keep your child home if they have any symptoms such as an uncontrolled cough, sore throat, congestion, or runny nose. For the health and safety of our school, students may not be in school if they have had a fever, vomiting, or diarrhea within the last 24 hours. When calling in your child to excuse them due to any illness, please specify what symptoms they are having as the school nurse has to monitor and report certain illnesses to the Health Department.

Students are reminded to bring a water bottle to school with them every day as staying hydrated is very important in helping the body fight off sickness and recover from illnesses.



*Pay Attention to Attendance:
Keep your child on track!*

- Talk about the importance of showing up to school every day.
- Help your children maintain daily routines, such as finishing homework and getting a good night's sleep
- If your children must stay home because they are sick or in quarantine, make sure they have asked teachers for resources and materials to make up missed work.



New Staff

We warmly welcome Kristine Maki K-12 school social worker and Shelsey Mleko grade 5-8 special education teacher.



Do you know the schools attendance policy?
It can be found in the student handbook starting on page 27. The handbook can be found on our school website.



Attend Today, Achieve Tomorrow



#schooleveryday

L'Anse Area Schools mission is students, staff and families working together to develop individual strengths, talents and responsibilities in a caring, respectful and safe environment.

31 Backpacks

Are you concerned with food insecurities? L'Anse Area Schools is proud to partner with 31 Backpacks to provide weekend food bags for students. If you are worried about having enough food for your family, please contact Heather Grentz or Risa Williamson for more information.

Upcoming Events

Dec 3rd End of Can-A-Thon

Dec 10th Band Concert 6:30

Dec 13th Progress Report 2 sent home

Dec 20th – Jan 2nd Winter Break



▶ We are participating in the TV 6 Can-A-Thon. Send your student to school with nonparishable food. Seniors and Juniors drop off location is Ms. Turpeinen's, Sophomore and Freshman is Mrs. Maddux, 8th grade is Mr. Kerry's, 7th grade is Mrs. Briggs, and 6th grade is Ms. Poniatowski.



▶ Michigan Tech Tutoring services. A free, virtual K-12 Tutoring Program provided by the students of Michigan Tech! <https://www.techtutors-mtu.org/>

L'Anse Area Schools use Skyward Family Access to keep you updated on attendance and grades. You can set alerts that notify you when your child has a missing assignment, has a low grade average or is late to class. Need your skyward family access log in and password, contact Gina at 524-6000 ext 300 or by emailing her at gmagaraggia@laschools.us. You can also contact Heather Grentz at hgrentz@laschools.us



Hornet Pride:

Be Responsible

Be Respectful

Be Safe



Website:
www.lanseschools.org



Contact:
906-524-6000 Ext 300



Email Newsletter ideas to:
hgrentz@laschools.us