

L'Anse Area School District
Susan Tollefson, Superintendent
201 N. 4th Street
L'Anse, Michigan 49946

Direct questions to: Laura J. Mathieu, Business Manager

Bids are due: May 9, 2017 at 1:00 P.M.

Security Camera System

L'Anse Area Schools is requesting proposals on a security camera upgrade for the district. These proposals should include all purchase, delivery, shipping, setup and configuration.

The Bid Package includes Eleven (11) sections:

District requests a bid for a complete wireless link installed from the C. J. Sullivan Elementary School wiring closet, (ES IDF1), to the Volunteer Field Press Box for security camera and wireless access points.

Will include: Ubiquity model: BM5-Ti (or equivalent) radios mounted indoors, cables, antennae, non-penetrating roof mounts with ballast, Category 6 cabling, wall mount rack in the press box, jacks, patch panels, patch cables, and all associated mounting hardware (j-hooks, etc).

- Two (2) Ubiquity Bullet M Zero Variable Outdoor Wireless Radio - Model: BM5-Ti (or equivalent)
- Two (2) Outdoor Panel Directional Antenna - TP Link Model: TL-ANT5823B 5 Ghz – (or equivalent)
- Two (2) radio cable from the radio to the antenna. The Bullet is N type male. N type female to N type male cable (different lengths selectable). TRENDnet LMR400 Model # TEW-L412 (or equivalent)

A viewing of the specific locations will be required for appropriate mounting hardware with pitch pad if applicable for each mount. Possible mounting hardware is detailed below:

IF FLAT ROOM MOUNTED:

- One (1) Non-penetrating Roof Mount tripod for FLAT ROOFS Model: FRM-125 – (or equivalent)
- One (1) Non-Penetrating Mount Pitch Pad - 37.5 Inch x 37.5 Inch (NPRMAT8) – (or equivalent) for each Flat Roof Mounted Tripod.

- Flat Roof Mount must be attached to cinder blocks in order to not penetrate roof surface.

IF SLOPED ROOF MOUNTED:

- One (1) Tripod Antenna Mount For Sloped Roof: 5-FT Mast. Heavy Duty – (or equivalent)

IF WALL MOUNTED (requires mount & mast):

- One (1) 24" Stand Off Wall Mast Mount - Deluxe Y Style Extra 3rd Leg Support EZ 30-24 by Easy-Up – (or equivalent)
- One (1) Channel Master CM1805 5-ft 18-Gauge Antenna Mast 1.25" outer diameter (but can be up to 1.75") by Channel Master or equivalent

District requests a bid for two network runs installed from the Volunteer Field Press Box network rack to WAP location in the center of the ceiling and Camera location centered on the front face of the press box directed towards the track directly in front of the bleachers.

- WAP location should be terminated to a double gain box in the center of the ceiling.
- Camera location should be terminated to a double gang box on the inside wall just opposite to where the camera is mounted on the outside wall. An outdoor rated Category 6 patch cable should be supplied of appropriate length to connect to the camera.

District requests a bid for one (1) Ubiquiti UAP-AC-PRO or equivalent wireless access point.

- Access point must include mounting bracket

District requests a bid for two outdoor rated Category 6 Ethernet connections installed from the Harvey N. Hyde Industrial Arts Building wiring rack to outbuilding noted on included mapping.

- This connection should be underground cabling in conduit with the cabling at the outbuilding noted on included mapping, side terminated to a wall mounted double gain network box inside the outbuilding.

District requests a bid for Switches:

- **Four (4)** PoE+ LAN edge switches - HP Aruba 2530-48G-PoE+-2SFP+ Switch (J9853A) or equivalent - (48 port PoE+ managed rack mount switch with minimum Two (2) 10 Gb/s SFP+ ports)

District requests a bid for Cameras and a Security Camera Server Software Package that are ineligible for USF Funding:

- **Four (4)** 1080p HD POE Ubiquiti Dome cameras Model UVC-G3-Dome or equivalent. Each camera must support motion detection recording. Cameras must integrate into a Server Based Security Service installable in Linux or Windows Server.
- **Eighty Two (82)** 1080p HD POE Ubiquiti directional camera Model UVC-G3 or equivalent. Each camera must support motion detection recording. Cameras quoted must integrate into a Standard Server Based Security Service installable in Linux or Windows Server.
- **One (1)** Security Camera Server Software Package which must have the feature of viewing all cameras as well as security recordings via a web interface accessible using Chrome or Firefox. This server platform must have the ability to hold 31 days of 1080p video for all 86 security cameras via H264/AVC files or H265/HEVC files (HEVC preferred). Solutions provided that have IOS and Android apps that integrate with the Security Server platform will have a higher priority for consideration. If a DVR appliance is quoted the appliance must be fully integrated with all cameras. Multiple DVR appliances must integrate into one unit/appear as one unit necessitating only one web based connection to view and search all cameras and camera recordings.

District requests a bid for network wiring

All costs must be listed and priced as detailed individual line items (ie, cable, labor, jacks, racks, patch panels, etc).

The following locations will need data wiring as noted with the following requirements

- Cabling will be a total of **174** cables, to **8 locations/closets**, as shown in the attached maps.
- Each run will go to the nearest MDF/IDF closet, not to exceed standard cabling lengths.
- Cabling will be installed to all relevant and applicable standards and best practices, including but not limited to ANSI/EIA/TIA 568B, 568C, 569B, 606 and the National Electrical Code (NEC).
- Contractor will provide and complete network cable installation including wiring/cabling, testing, certification, cable hangers, jacks, boxes, faceplates, raceway, patch panels, connectors, and labels, as needed. Existing racks are in place and to be used. All network cable will be properly installed according to the NEC, supported with J-hooks or hangers as needed (no cable laying on the drop ceiling)
- All new network wiring will be **clearly labeled by contractor** on both ends with label maker.
- All new network wiring, patch panels, and connectors will be a minimum Category 6, tested, labeled and certified to at least 1 Gb/s.
- Map locations are approximations for bidding, exact locations to be mutually agreed upon prior to installation.
- The IDF and MDF network locations are also marked on the map for reference.
- All building penetrations will be properly sealed for weather and fire retardance.

- Each marked camera network run will be 2 cables, 2 jacks, unless otherwise noted.
- Camera and wireless terminations are preferred above drop ceilings, with appropriate patch cable connection to below the drop ceiling. In locations without a drop ceiling, a wall mount box will be required. For external cameras, the jack should be located inside the building, with a patch cable from the inside jack to the external camera location.
- All installed premise cabling (including above ceiling, data, wireless, camera, and security cable runs) **will be terminated to an appropriate Category 6 jack with box** - not RJ-45 cable ends. All cabling terminating in the wiring closet(s) will be terminated to an appropriate Category 6 rated patch panel. Patch panel costs should be included in the bid.
- All appropriate length needed closet patch cables to connect from newly installed patch panel to switches (1-3 feet Category 6 stranded UTP cable).
- All needed classroom/endpoint patch cables to connect from newly installed jacks to equipment (average 3 feet, Category 6 stranded UTP cable).
- Wiring locations to be addressed using the above specifications: Please see included maps.

District requests a bid for Mounting and aiming of Security Cameras

- District will purchase Ubiquiti security cameras under a separate contract. Include in this bid a separate line item cost for installation of these cameras during the wiring project, on a per camera basis. Installation will include physically mounting up to 86 cameras at the exact location marked on the included maps and aiming those cameras to the specifications of the district. This item will not be USF eligible, but will be coordinated as part of the overall security project. Cameras and mounting hardware will be supplied by the district.

District requests a bid for Mounting one wireless access point

- The access point is to be mounted in the volunteer field press box flat on the ceiling.
- The access point will be supplied by the district along with mounting plate. WAP must be installed securely using the wap mounting bracket. Its possible framing may need to be installed to securely mount wap. All hardware and labor costs must for mounting the wap must be included in the bid.
- Wiring and jack will be installed prior to wap installation.
- Exact locations to be mutually agreed upon prior to installation.

District requests a separate bid for specific network wiring

All costs must be listed and priced as detailed individual line items (ie, cable, labor, jacks, racks, patch panels, etc).

The following locations will need data wiring as noted with the following requirements

- Cabling will be a total of **36** cables, to **3 locations/closets**, as shown on the **H. N. H. Industrial Arts Building and Exterior Camera maps**.
- Each run will go to the nearest MDF/IDF closet, not to exceed standard cabling lengths.

- Cabling will be installed to all relevant and applicable standards and best practices, including but not limited to ANSI/EIA/TIA 568B, 568C, 569B, 606 and the National Electrical Code (NEC).
- Contractor will provide and complete network cable installation including wiring/cabling, testing, certification, cable hangers, jacks, boxes, faceplates, raceway, patch panels, connectors, and labels, as needed. Existing racks are in place and to be used. All network cable will be properly installed according to the NEC, supported with J-hooks or hangers as needed (no cable laying on the drop ceiling)
- All new network wiring will be **clearly labeled by contractor** on both ends with label maker.
- All new network wiring, patch panels, and connectors will be a minimum Category 6, tested, labeled and certified to at least 1 Gb/s.
- Map locations are approximations for bidding, exact locations to be mutually agreed upon prior to installation.
- The IDF and MDF network locations are also marked on the map for reference.
- All building penetrations will be properly sealed for weather and fire retardance.
- **Each marked camera network run will be 2 cables, 2 jacks, unless otherwise noted.**
- Camera and wireless terminations are preferred above drop ceilings, with appropriate patch cable connection to below the drop ceiling. In locations without a drop ceiling, a wall mount box will be required. For external cameras, the jack should be located inside the building, with a patch cable from the inside jack to the external camera location.
- All installed premise cabling (including above ceiling, data, wireless, camera, and security cable runs) **will be terminated to an appropriate Category 6 jack with box** - not RJ-45 cable ends. All cabling terminating in the wiring closet(s) will be terminated to an appropriate Category 6 rated patch panel. Patch panel costs should be included in the bid.
- All appropriate length needed closet patch cables to connect from newly installed patch panel to switches (1-3 feet Category 6 stranded UTP cable).
- All needed classroom/endpoint patch cables to connect from newly installed jacks to equipment (average 3 feet, Category 6 stranded UTP cable).
- Wiring locations to be addressed using the above specifications: Please see included maps.

District requests a separate bid for specific network wiring

All costs must be listed and priced as detailed individual line items (ie, cable, labor, jacks, racks, patch panels, etc).

The following locations will need data wiring as noted with the following requirements

- Cabling will be a total of **54** cables, to **8 locations/closets**, as shown on the attached camera maps - **Cameras # 19 - 45 in peach.**
- Each run will go to the nearest MDF/IDF closet, not to exceed standard cabling lengths.
- Cabling will be installed to all relevant and applicable standards and best practices, including but not limited to ANSI/EIA/TIA 568B, 568C, 569B, 606 and the National Electrical Code (NEC).

- Contractor will provide and complete network cable installation including wiring/cabling, testing, certification, cable hangers, jacks, boxes, faceplates, raceway, patch panels, connectors, and labels, as needed. Existing racks are in place and to be used. All network cable will be properly installed according to the NEC, supported with J-hooks or hangers as needed (no cable laying on the drop ceiling)
- All new network wiring will be **clearly labeled by contractor** on both ends with label maker.
- All new network wiring, patch panels, and connectors will be a minimum Category 6, tested, labeled and certified to at least 1 Gb/s.
- Map locations are approximations for bidding, exact locations to be mutually agreed upon prior to installation.
- The IDF and MDF network locations are also marked on the map for reference.
- All building penetrations will be properly sealed for weather and fire retardance.
- **Each marked camera network run will be 2 cables, 2 jacks, unless otherwise noted.**
- Camera and wireless terminations are preferred above drop ceilings, with appropriate patch cable connection to below the drop ceiling. In locations without a drop ceiling, a wall mount box will be required. For external cameras, the jack should be located inside the building, with a patch cable from the inside jack to the external camera location.
- All installed premise cabling (including above ceiling, data, wireless, camera, and security cable runs) **will be terminated to an appropriate Category 6 jack with box** - not RJ-45 cable ends. All cabling terminating in the wiring closet(s) will be terminated to an appropriate Category 6 rated patch panel. Patch panel costs should be included in the bid.
- All appropriate length needed closet patch cables to connect from newly installed patch panel to switches (1-3 feet Category 6 stranded UTP cable).
- All needed classroom/endpoint patch cables to connect from newly installed jacks to equipment (average 3 feet, Category 6 stranded UTP cable).
- Wiring locations to be addressed using the above specifications: Please see included maps.

•

Bids are due: May 9, 2017 by 1:00 p.m.

L'Anse Area Schools reserves the right to reject any or all proposals. We will select the winning proposal based on the quality of the proposal, the vendor's reputation, and the price. The district will award the contracts where in the judgment of the district, such award is in the best interest of the district.

Some of the district USF RFPs do not contain detailed specifications for the hardware needed to accomplish said purpose. Rather, it contains a description of the general functional requirements of the various buildings and Internet connectivity. It is left to the respondent to evaluate the needs of the District, and propose specific solutions accordingly. Proposals will be partially judged on how well this is done. Each proposal received, whether for all or part of the envisioned system, will be evaluated on its merits. Cost is a significant factor in any such evaluation, but it is the District's goal to develop a quality, as well as cost-effective, system.

Inquiries

All questions regarding an RFP are to be submitted via E-mail to the address listed on the appropriate form 470.

Submitting Proposals

Send final proposals to:

L'Anse Area School District
Susan Tollefson, Superintendent
201 N. 4th Street
L'Anse, Michigan 49946

Process for Submitting Proposals

Proposals shall be organized into the following sections to make it easier for the District to evaluate them.

- Table of contents with page numbers
- Company brief including vendor USF SPIN and FCC RN numbers
- Summary
- Proposed configurations and costs

All costs will be broken down and priced as individual line items

- Hardware and Software specifications where appropriate
- Installation, if applicable
- List of references/customers
- Addendum, if needed

The proposal shall contain a cover letter made upon the letterhead of the respondent. Sealed proposals are to be delivered to the District on or before the Closing Date and Time. Proposals should be clearly marked - "Proposal for USF RFP for (service)". Proposals received after the closing date and time will be rejected.

Selecting Proposals

Proposals will be selected using the following criteria at minimum (listed in order of importance) which are all subject to review by our staff.

- Price
- Conformity to District Standards (see specifications page)
- Dealer Reputation for quality and service
- Brand Reputation and Quality
- Proximity of Repair Personnel
- Warranty/Service/Support
- Product Availability and Delivery
- Vendors adherence to bid specifications.

Other Selection Criteria

1. Alternatives, variations and exceptions must be clearly stated.

2. We reserve the right to consider proposals based on their relative merit, risk and value to our school district.
3. We reserve the right to negotiate with any vendor. The successful vendors may be asked to participate in negotiations and be asked to make revisions to their proposals based on these negotiations.
4. We reserve the right to cancel in part or in full, this RFP if it is in the best interest of our students.
5. This RFP does not commit us to award a contract, to pay any costs incurred in the preparation of a response to this request, or to procure or contract for services or equipment.
6. Where the quantity purchased affects the price per unit, the vendor is to indicate the price break points in relation to the number of units.
7. Product pricing shall be in effect for the period covered by this USF application.
8. The vendor's proposal will indicate the product's availability and a delivery timetable.
9. All bids must be itemized and include the cost per unit and total extended cost of items. Any and all delivery, shipping, and insurance charges must also be listed.
10. In submitting a bid, each vendor represents that they have read and understand these requirements.
11. Any USF ineligible components will be broken out by the vendor, with separate costs for each component. If ineligible components cannot be cost allocated and are part of the standard product offering, the vendor will include a signed statement to that effect.
12. Month-to-month services are preferred when possible, to ease USF paperwork and limit long term commitments and termination fees, but the district reserves the right to choose the length of commitment that best serves the district, including multiple year contracts.

Vendor Requirements

Vendors must be an authorized re-seller of the products that they propose.

Vendors must list the certifications that they possess that are relevant to the products or work they propose.

Vendors may be asked to provide references related to product installation, financial stability, support services and/or understanding of educational computing needs.

Vendors are required to comply with all USF and FCC regulations, including but not limited to document retention requirements.

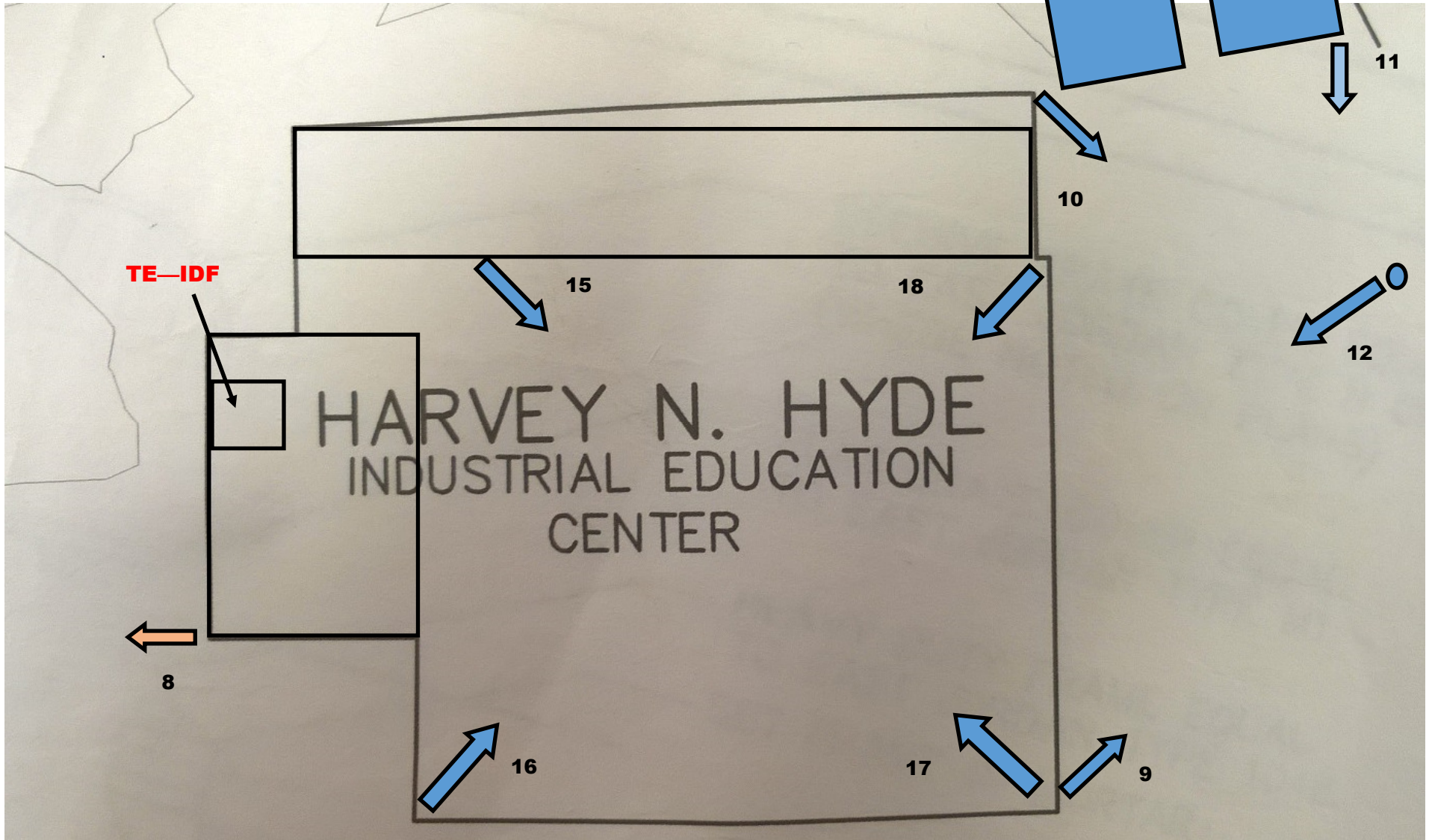
Vendors are required to have a valid Service Provider Identification Number (SPIN) number and have filed a current Service Provider Annual Certification (SPAC).

Vendors will bill for all products and/or work in accordance with all e-rate rules and regulations.

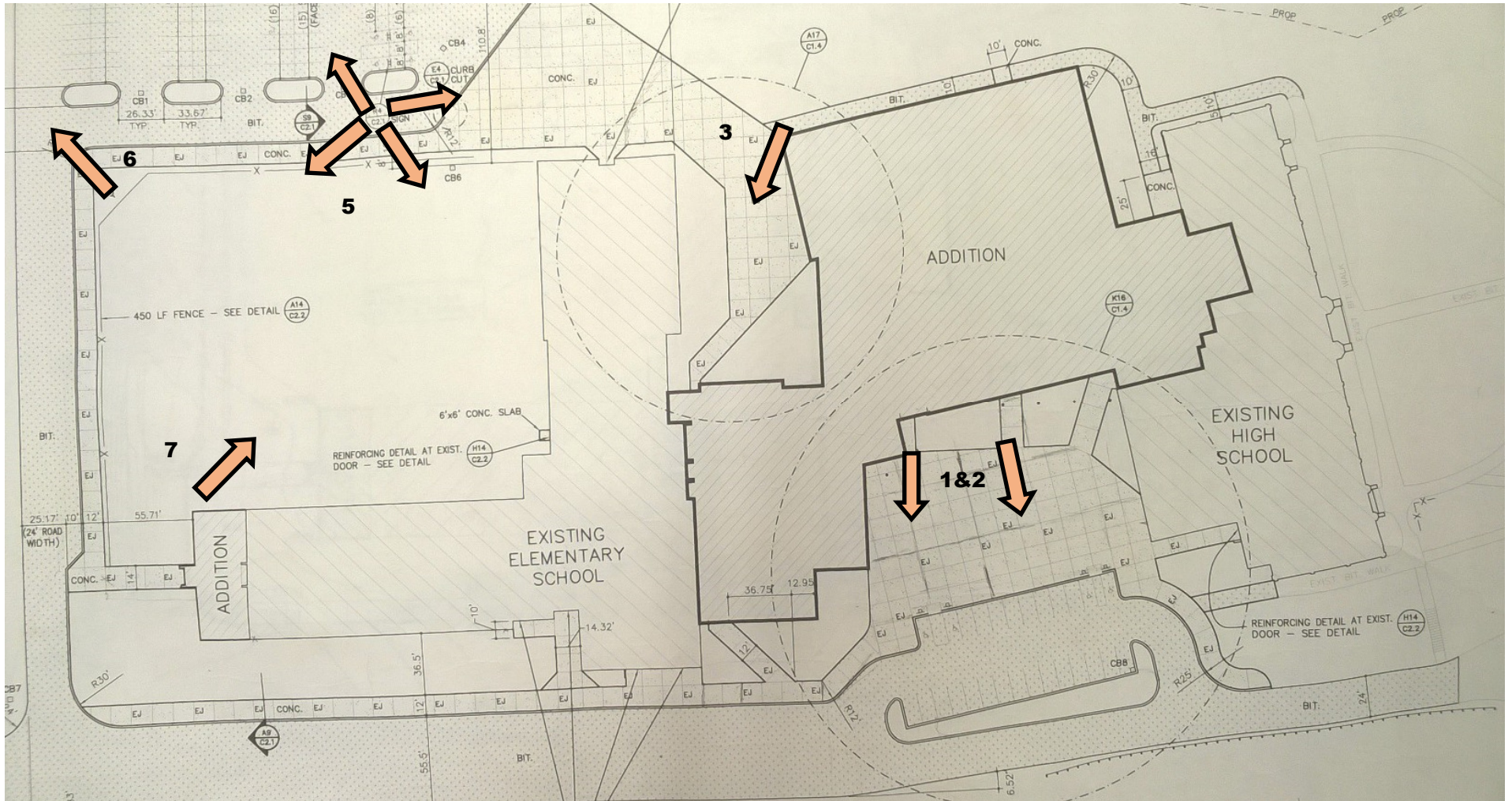
Rejection of Proposals

The District reserves the right to accept or reject any and all proposals and to waive any minor discrepancies or technicalities in the proposal or specifications, or in the event that the Universal Service Funding, which is required to complete this project fails, or when deemed to be in the best interest of the District.

H. N. H. Industrial Arts Building—Cameras noted in Blue (existing) and Peach (new) Arrows.

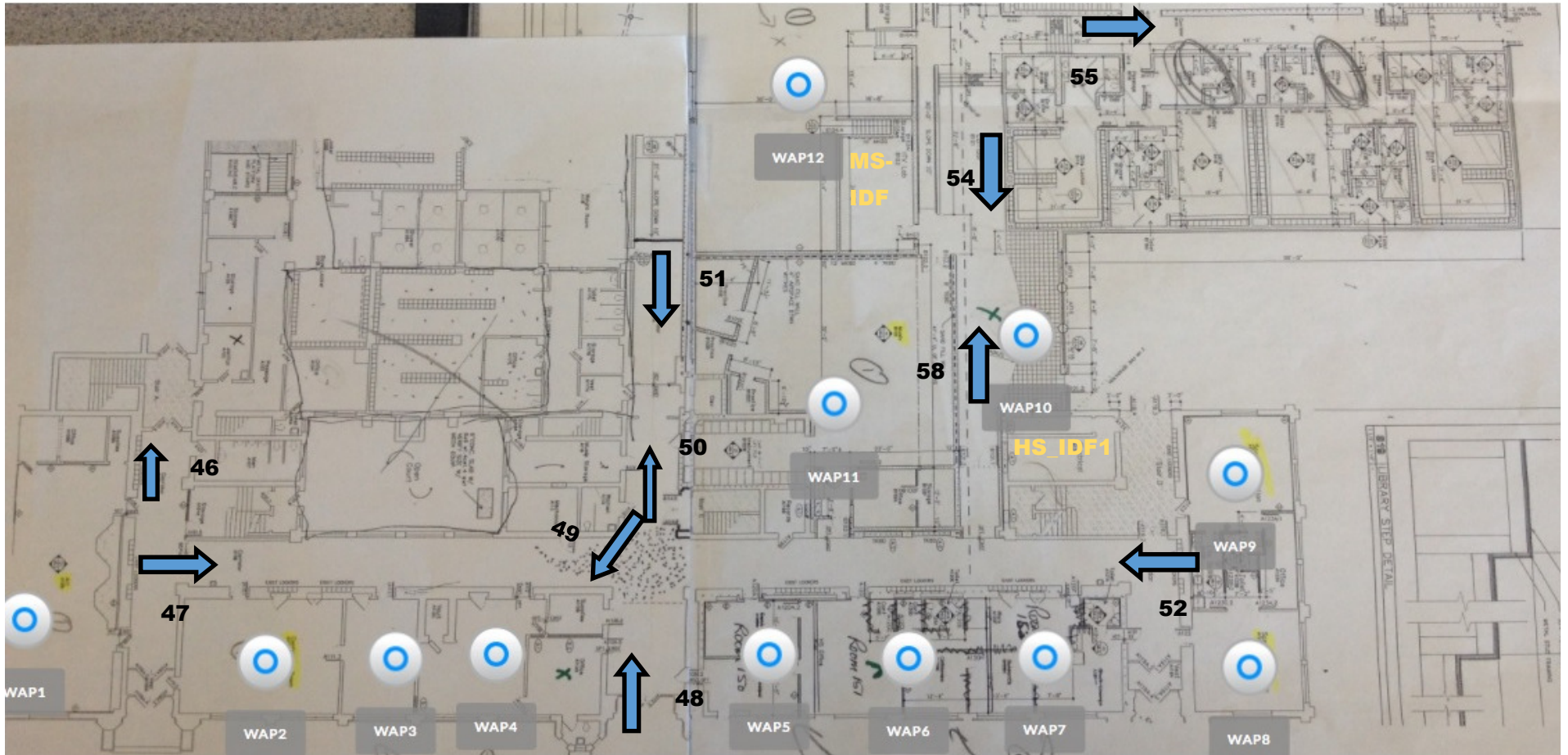


Exterior Cameras—Main Complex—Cameras mapped as Blue (existing) and Peach (New) Arrows.

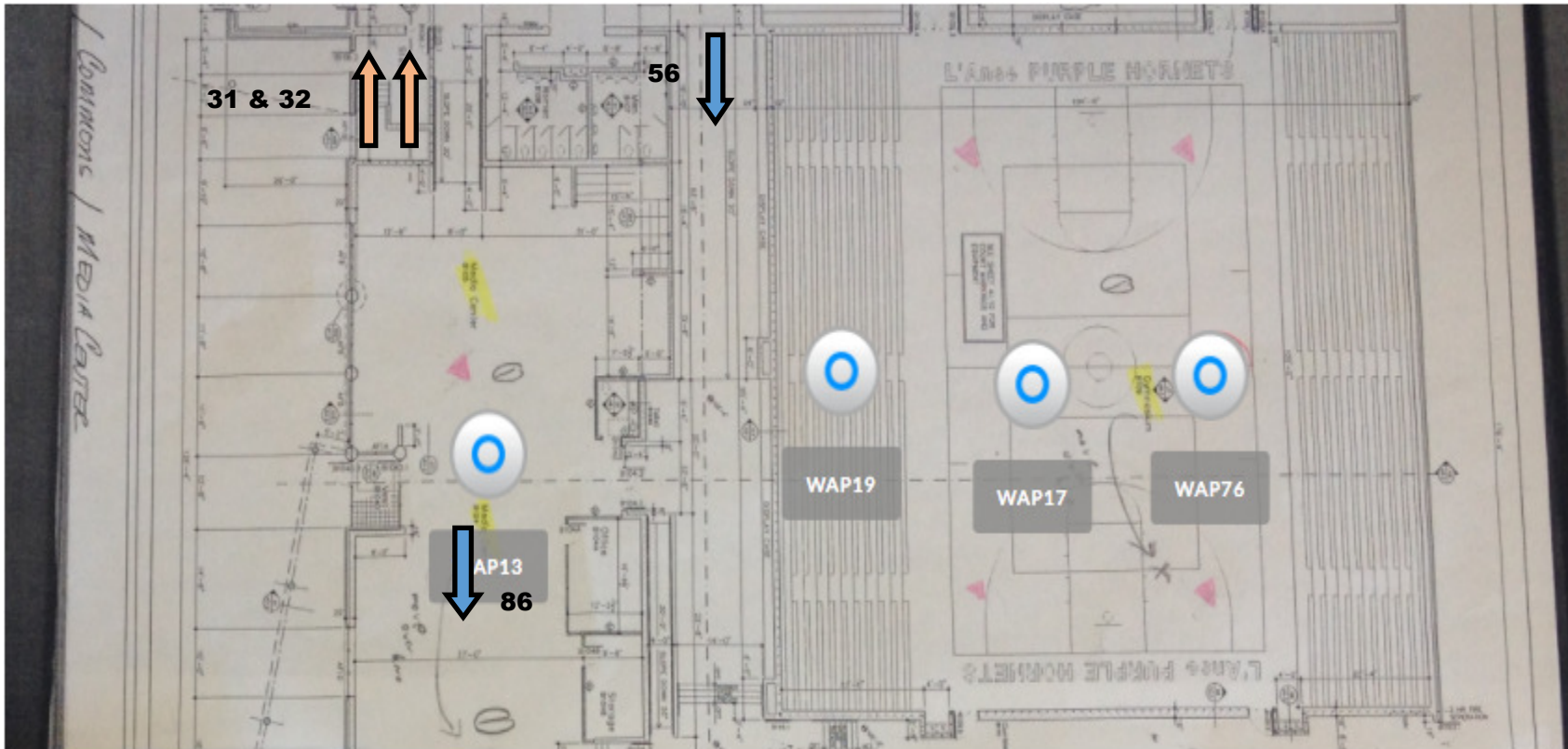


Camera 5 consists of 4 Dome Cameras

First Floor—L'Anse High School—including 2000 Addition—Cameras noted by Blue Arrows (existing) and Peach (new) and numbered. MS-IDF & HS_IDF`1 noted.

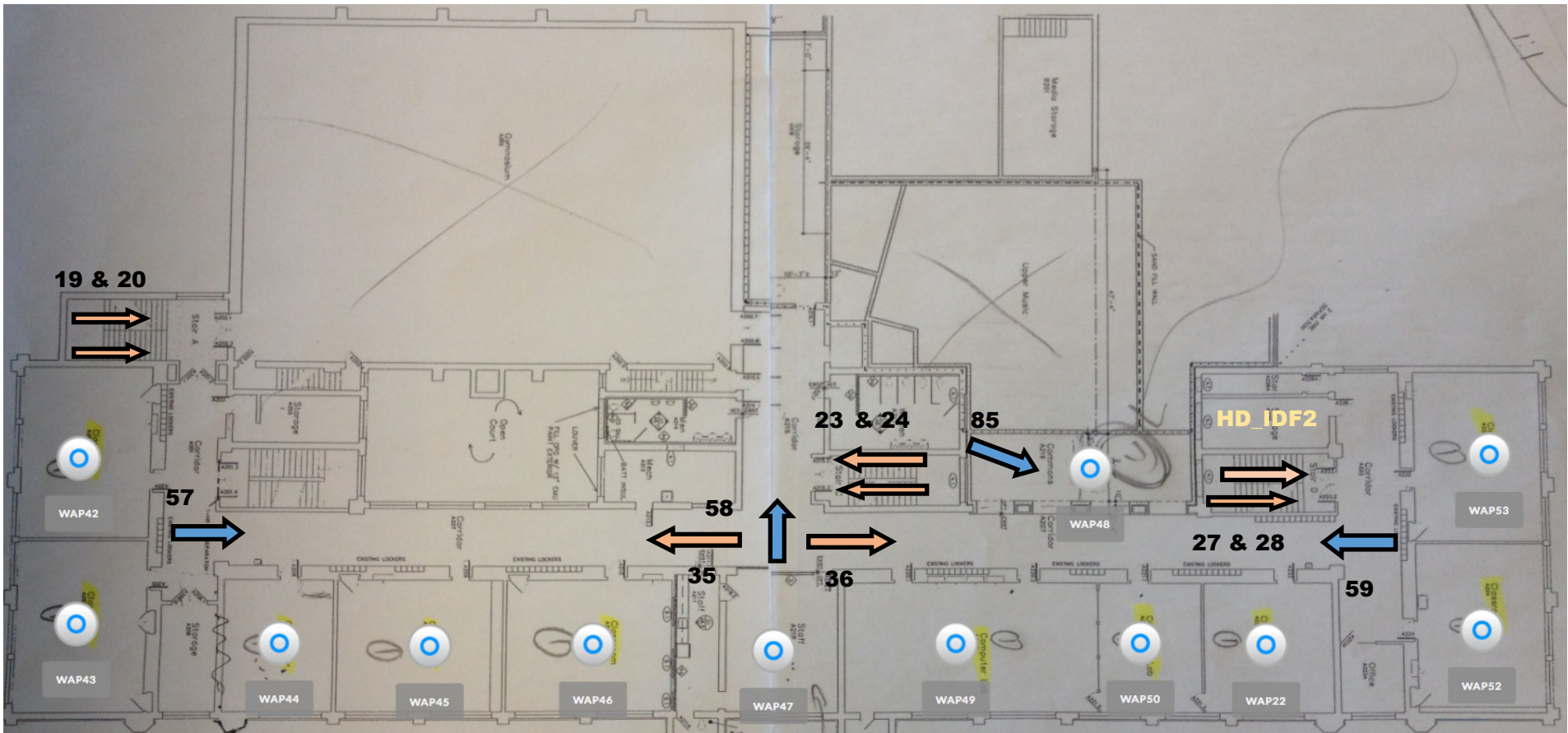


Addition—1st Floor—Library / Commons Hallway / Gymnasium—Cameras noted in Blue (existing and Peach (new) as noted on map.

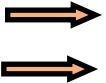


Denotes two stairwell cameras—wall mounted showing up and down stairs.

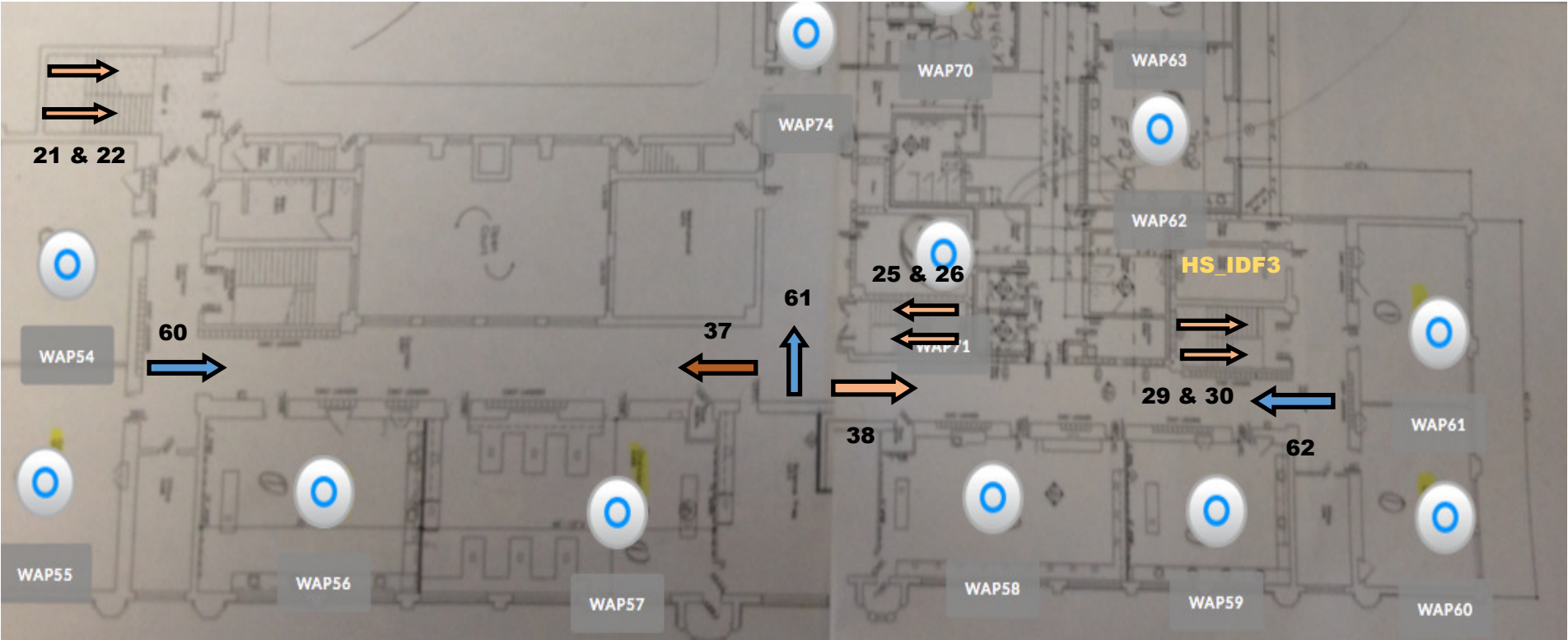
2nd Floor—L'Anse High School—Cameras noted by Blue (existing) and Peach (new) Arrows and numbered—HS_IDF2 Wiring / Switch closet also noted.



Denotes Stairwell Cameras—up and down



High School—3rd floor camera mapping—including HS_IDF3. Cameras noted in Blue (existing) and Peach (new) Arrows.



 **Denotes Stairwell Cameras—up and down.**

2000 Addition—3rd Floor—Cameras shown as Blue (existing) and Peach (new) Arrows and numbered



 **Denotes Stairwell Cameras—up**
 **and down**

C. J. Sullivan - Camera Mapping—Cameras indicated by Blue (existing) and Peach (new) Arrows with numbering—

